



**A quick look.  
Accelerated answers.  
A more efficient workflow.**

A pocket-sized visualization tool with ultrasound technology, Vscan™ can potentially redefine the cardiac patient exam.

Vscan gives you a fast look into the heart right during the exam. Quickly assess cardiac anatomy and function when needed. You get answers to focused cardiovascular questions. And accelerate closer follow-up – for efficient workflow and better patient management.

GE Healthcare

Menu



Vscan



## **Vscan inferior vena cava**

### **Clinical scenario**

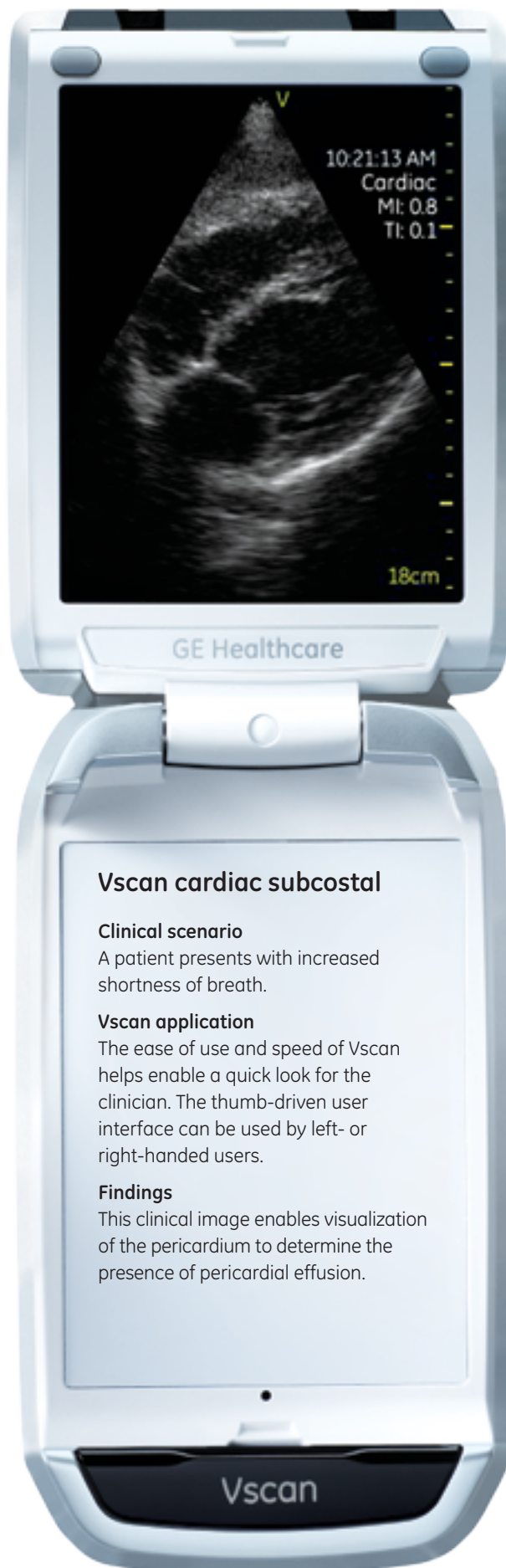
A patient presents for an annual physical with no new complaints.

### **Vscan application**

Vscan helps enable basic distance measurement directly on-board with its quick and simple user interface.

### **Findings**

The image helps demonstrate the opening of the inferior vena cava.



## **Vscan cardiac subcostal**

### **Clinical scenario**

A patient presents with increased shortness of breath.

### **Vscan application**

The ease of use and speed of Vscan helps enable a quick look for the clinician. The thumb-driven user interface can be used by left- or right-handed users.

### **Findings**

This clinical image enables visualization of the pericardium to determine the presence of pericardial effusion.



## Vscan mitral valve with color

### Clinical scenario


A patient presents for his annual physical with no new complaints.

### Vscan application

Vscan image quality has been optimized for diverse cardiac views and modes. One-button color flow can be used to assess valve function.

### Findings

This clinical image helps demonstrate color flow reversal through the mitral valve, consistent with mitral regurgitation.



**A powerful visualization tool.  
As handy as your stethoscope.**

Small and lightweight, Vscan slips easily into your lab coat pocket. So it's always with you – just like your stethoscope.

Its ample battery capacity provides over one hour of scanning on a single charge – plenty of power for a full day's worth of patient exams.

**See the heart clearly to help streamline care.**

Vscan's advanced technology provides clear, high-quality images

GE Healthcare

to help you visualize the cardiac anatomy with ease. By helping to speed diagnoses, Vscan can reduce patient wait times and improve your workflow, for faster, more efficient patient care.

**Simple one-hand control.**

Held in one hand, Vscan features an intuitive user interface that's easily controlled with just your thumb. Two standard imaging modes – black and white for anatomy and color-coded blood flow – are enhanced by a wide variety of convenient applications.

Vscan

**As easy to learn as it is to use.**

The Vscan online Portal Webucation provides excellent training tools to get you started – everything from basic imaging techniques and anatomy, to troubleshooting tips and sample clinical images. Helping you to begin using Vscan in your clinical environment.

For more information, visit us at [vscan.gehealthcare.com](http://vscan.gehealthcare.com)

GE Healthcare

Menu



Vscan

